



harfieldtableware.co.uk



Key features:

- 350ml (12.3oz) capacity
- **Antibacterial** - 24 hour protection against the growth of harmful micro-organisms
- **Insulated** to keep your drink warm for longer
- Comes complete with **comfort pack** (including spout protector & foot)
- The foot provides an **anti-slip base** to give the cup extra stability
- Optional **Sleeve** (261)
- 100% **Recyclable**
- Wide range of stock & custom **colours** - the inner, outer, lid & sleeve can be different colours & you can **personalise it** with your own design
- **Dishwasher** safe

I am 100% recyclable!

The cup is made from PP and the lid is made from PE-HD.

The spout protector and foot are made from TPE.

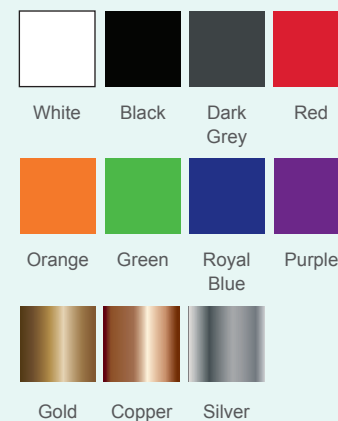
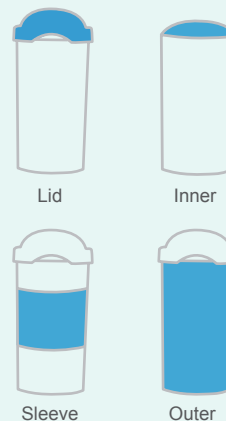
The sleeve is made from HIPS.

Please return me to Harfield Components Limited,
Hammond Avenue, Whitehill Industrial Estate,
Stockport, SK4 1PQ to be recycled.

Points to remember:

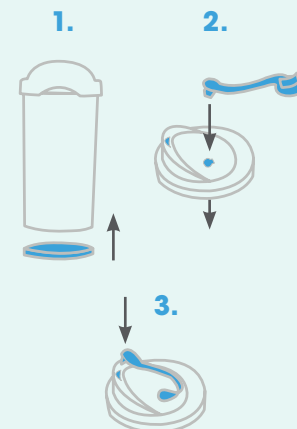
- Take care when using your coffee cup, contents may be hot.
- Your coffee cup is not a sealed container so always ensure it's stored upright and never overfilled.
- Dishwasher safe on top shelf only.
- Your cup is microwave safe for reheating drinks.

Personalisation Options:



Assembly Instructions:

1. Push foot into the base.
2. Place arrow head of spout protector vertically through the hole on the lid and pull through until the head is secure.
3. Fold the moon shaped head of the spout protector into the moon shaped hole on the lid to protect spout.





THE NEW HARFIELD COFFEE CUP

100% RECYCLABLE
REUSABLE
ANTIBACTERIAL

#HARFIELDCOFFEECUP

harfieldtableware.co.uk

