

# Food Service Products from Natural Sustainable & Renewable Resources



available from First Stop Supplies

# *enviroware*

supplying environmentally friendly  
food packaging for over 11 years



The Enviroware® range consists of catering disposables made from natural, sustainable and renewable resources such as Ingeo PLA (Polylactic acid, derived from cornstarch) and moulded fibreboard (made from non-wood fibres such as bagasse (sugar cane fibre) and bamboo).

As a leading supplier within the food service sector, Celebration understands the increasing pressures our customers face in endeavouring to operate in an environmentally friendly fashion. We strive to monitor new advancements in the market in order to meet these requirements - to ensure that a complete range is available; that is, as far as practical, manufactured from sustainable and renewable resources.

Our range is constantly evolving, however if you are trying to source a type of food / drink packaging which isn't shown in our brochure – please contact us and we'll endeavour to help you find a suitable product.

---

As members of the Food Packaging Association, we are BRC, ISO 9001 & ISO 14001 certified, so you can rest assured we have the best possible products and processes.

Most of our paper/wood products are FSC® (Forest Stewardship Council®) accredited, demonstrating our commitment to using sustainable materials from a responsible source.

We also hold "OK Compost" and "Din Certco" accreditation identifying which products are commercially compostable according to EU regulation EN13432.

Please contact us for further information on our products and associated accreditations.



<b>Paper Hot Drink Cups &amp; Accessories</b>	
Leaf 2 Design Single & Double Wall Hot Drink Cups & Lids .....	07
'I am eco™' Design Ripple Wrap Hot Drink Cups & Lids .....	08
Recyclable Cup Carriers .....	08
Ecotainer™ Cup Buddys .....	08
Ecotainer™ Paper Hot Drink Cups & Lids .....	09
Wooden Stirrers .....	10
Paper straws .....	10
<b>Clear Cold Drink Cups &amp; Combination Cups</b>	
Clear PLA Cold Drink Cups & Lids .....	11
Clear PLA Combination Lids & Portion Pots .....	12
<b>Clear Round Food Containers</b>	
Clear PLA Containers & Lids .....	13
Portion Pots & Lids .....	14
<b>Round Paper Food / Soup Containers &amp; Lids</b>	
Leaf 2 Design Kraft Paperboard Food Containers .....	15
Leaf 2 Design White Paperboard Food Containers .....	16
Ecotainer™ Paperboard Food Containers .....	17
<b>Dinnerware &amp; Serving Trays</b>	
Moulded Fibre Plates, Platters, Bowls & Trays.....	18
Regalia™ Bagasse (Sugar Cane Fibre) Trays & Lids .....	20
<b>Take Away Food Boxes</b>	
Hinged Fast Food Boxes / Clamshells .....	21
Folia™ Take Away Food Containers .....	22
Rectangular Food Trays with PP Plastic Lids .....	22
Palm Leaf Plates & Bowls .....	23
Kraft Paper Food Trays .....	24
<b>Cutlery</b>	
Wooden Cutlery .....	24
CPLA Commercially Compostable Cutlery.....	25
<b>Bakeware</b>	
Wooden Baking Moulds with Silicone Paper Inserts .....	26

## Poly-lactic Acid (PLA) products

### What is PLA?

Manufactured by NatureWorks LLC in the USA, Ingeo PLA is a unique bio-based material derived from naturally occurring plant sugar.

Ingeo is made from dextrose (sugar) which is processed from field corn (maize), the most economically feasible source of plant starches. The production of the Ingeo bioplastic uses less than 0.04% of the annual global corn (maize) crop, so there's little to no impact on food prices or supply.

Ingeo is transformed into packaging which looks and feels like traditional plastic packaging - it is strong and durable to protect food and retain freshness. The products are crystal clear offering excellent presentation to the consumer.

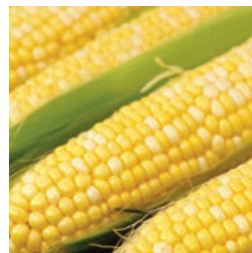
The production of Ingeo requires fewer fossil fuel resources and generates fewer greenhouse gasses in comparison to most traditional plastics. By design, using Ingeo results in 75% less greenhouse gases than the oil-based PET or PS plastic it replaces, even if both end up in landfill (NatureWorks LLC 2015).

### Which Enviroware® products are made from PLA?

Ingeo PLA plays a key part in the Enviroware® range.

Products made from PLA include:

- Clear Cold Drink Cups and Lids
- Combination Lids & Portion Pots for Clear Cold Drink Cups
- Clear PLA Containers & Lids
- Clear Portion Pots and Lids
- Clear Deli Containers and Lids
- CPLA Cutlery
- Enviroware® paperboard hot drink cups and food containers are lined with a PLA moisture barrier. Commercially compostable CPLA lids are also available for some of the hot drink cups.



---

## Disposal Options for Ingeo PLA

### Composting

The material has been tested in accordance with EN-13432 (European standard for commercially compostable packaging) and was found to meet all necessary requirements. As a result DIN CERTCO certification has been attained. Commercial composting of Ingeo PLA products leads to complete decomposition.

### Incineration (with potential for energy recovery)

Another end-of-life option used globally is incineration. Incineration is a popular method of municipal waste disposal throughout Europe; PLA products are non-toxic and can therefore be burnt more cleanly compared with their oil based alternatives.

### Recycling

In June 2008, a report published by the internationally recognised, non-profit "Waste Resources Action Program" (WRAP) stated: "Near-infrared (NIR) systems can effectively remove Ingeo bioplastics from a mixed packaging stream".

Once there is a significant amount of PLA in the market, there is scope for waste management companies across Europe to sort PLA, via infrared detection, into a pure waste stream. This would allow for the material to be closed-loop recycled.

*\*\*Please note that standard clear PLA products are currently only suitable for cold/ warm food with a temperature range of -20 to +40°C, approximately.*

## Bagasse Moulded Fibre Products

### What is Moulded Fibre?

Moulded fibre products are made from natural non-wood fibres (not from trees), deriving from fast growing plants, such as bamboo, sugarcane and reeds.

Once these plants have had their juice extracted, the leftover residue (often referred to as bagasse) is processed into a fine paper pulp which is then put into moulds, pressurised and dried to create environmentally friendly packaging.

The water used throughout the manufacturing process is also recycled.

---

### Which Enviroware® products are made from Moulded Fibre?

- Moulded Fibre Plates, Platters, Bowls & Trays
- Regalia™ Bagasse Trays & Lids
- Hinged Fast Food Boxes / Clamshells
- Rectangular & Square Food Containers with Separate Lids
- Folia™ Take Away Food Containers

Enviroware® Moulded Fibre Products are suitable for use in microwaves and chillers and are ideal for use with dry hot foods.



## Other Materials

Materials used to make up our Enviroware® product range are described below.

### Palm Leaf

Produced in India, Palm Leaf plates and bowls are made from discarded leaves from the Adaka nut palm. The leaves are collected, cleaned and then mechanically pressed into a mould at 120°C; no additional treatments are required. Each individual item has its own unique pattern and structure.



### Paper Board

Our hot drink cups and round paper food containers are made from paperboard with a PLA inner lining. Stock designs include bleached white and kraft brown unbleached paper board options. Where stated in this brochure, these products are FSC® (Forest Stewardship Council®) certified.

### Plastic (PS, PET & PP)

For our Enviroware® range, we try to avoid use of plastics and any other materials which aren't natural, renewable and sustainable. However, sometimes it is preferable to use a packaging component made from plastic, due to the materials specific characteristics such as heat resistance, rigidity or suitability for freezing. We offer plastic lids for our paper hot drink cups, round paper food containers and for some food trays and dinnerware items. Unfortunately, plastic isn't compostable, so once used, plastic packaging should be recycled if possible.



The mark of  
responsible forestry



### Wood

Wooden Enviroware® products include drink stirrers, cutlery and baking moulds. Where stated in this brochure, these products are FSC® (Forest Stewardship Council®) certified.

## Paper Hot Drink Cups & Accessories

Our cups are available in a range of popular sizes with accessories such as lids, stirrers and cup carriers available to compliment them.

### Leaf 2 Design Paper Hot Drink Cups - Double & Single Wall

Our environmentally friendly stock design paper hot drink cups have the Din Certco accreditation printed on the side of the cup as proof that the cup can be commercially composted. Available in single wall or double wall, the latter providing increased insulation and hand comfort. Both varieties are available in three popular sizes - 8oz, 12oz and 16oz. The cups have a PLA inner lining, allowing them to be commercially composted. The environmental benefits of the cups are incorporated into the design, with the key words printed clearly around the cup... sustainable, renewable and compostable.

Sipper domed lids are available to fit the cups. Choose from either CPLA commercially compostable lids or PS white plastic lids (PS lids can be recycled, they are not commercially compostable).

Custom printing available.



#### Leaf 2 Double Wall Paper Hot Drink Cups – Green with Green Leaf Logo

Stock Code	Description	Capacity	Dimensions (DxH)	Case Qty
EL2DW08	8 fl.oz Leaf 2 Double Wall Hot Cup	278ml	80 x 92mm	500
EL2DW12	12 fl.oz Leaf 2 Double Wall Hot Cup	390ml	90 x 108mm	500
EL2DW16	16 fl.oz Leaf 2 Double Wall Hot Cup	454ml	90 x 136mm	500

#### Leaf 2 Single Wall Paper Hot Drink Cups – White with Green Leaf Logo

Stock Code	Description	Capacity	Dimensions (DxH)	Case Qty
EWL2SW08	8 fl.oz Leaf 2 Single Wall Hot Cup	275ml	80 x 95mm	1000
EWL2SW12	12 fl.oz Leaf 2 Single Wall Hot Cup	418ml	90 x 113mm	1000
EWL2SW16	16 fl.oz Leaf 2 Single Wall Hot Cup	454ml	90 x 134mm	1000



Pictured above (left - right): Leaf 2 Double Wall Hot Drink Cup & Leaf 2 Single Wall Hot Drink Cup (12oz capacity shown)

#### Commercially Compostable CPLA Lids

Stock Code	Description	Case Qty
EPLALS	Sipper Dome Lid White to fit 8 fl. oz	1,000
EPLALL	Sipper Dome Lid White to fit 12 & 16 fl. oz	1,000

#### PS Plastic Lids (not commercially compostable)

Stock Code	Description	Case Qty
EPS08CLW	Sipper Dome Lid White to fit 8 fl. oz	1,000
EPS12CLW	Sipper Dome Lid White to fit 12 & 16 fl. oz	1,000

For more information contact us on tel: +44(0)1283 538259 email: [sales@celebration.co.uk](mailto:sales@celebration.co.uk) or visit: [www.envioware.co.uk](http://www.envioware.co.uk)

## 'I am eco™' Design Hot Drink Cups

I am eco™ paper hot drink cups are made with a bio-film lining and are 100% commercially compostable. They feature a ripple wrap™ exterior which helps to keep drinks hot whilst and hands cool.

'I am eco™' Paper Hot Drink Cups – Stock Design				
Stock Code	Description	Capacity	Dimensions (DxH)	Case Qty
ECOBROWN08	8 fl.oz Hot Cup	240ml	80 x 93mm	1,000
ECOBROWN12	12 fl.oz Hot Cup	360ml	90 x 103mm	1,000
ECOBROWN16	16 fl.oz Hot Cup	480ml	90 x 135mm	500



## Recyclable Cup Carriers

Cup carriers have a strong rigid design, facilitating the safe transportation of hot or cold beverages. These natural brown card carriers are compatible with many sizes of disposable drink cups. They are supplied flat packed to save storage space and incorporate a central perforation for easy assembly as either a 2 or 4 cup carrier.

Recyclable cup carriers for 2 or 4 cups				
Stock Code	Description	Dimensions (LxWxH)	Case Qty	
RCC24	2 Cup / 4 Cup Recyclable Brown Cup Carrier	198 x 175 x 36mm	100	



## Ecotainer™ Cup Buddy

The Ecotainer™ cup buddy is a pre-assembled sleeve designed for use with our range of Ecotainer™ Hot Drink Cups. The sleeve slides effortlessly over the 10oz, 12oz or 16oz cups, providing a highly insulated cup – ideal for take away hot drinks. The Cup Buddy is manufactured from 100% recycled kraft paper (60% post consumer recycled fibre); they are recyclable and commercially compostable. Custom printing available.

Ecotainer™ Cup Buddy		
Stock Code	Description	Case Qty
RSK20	Brown Paper Sleeve with Ecotainer™ Print To fit 10, 12 & 16oz Ecotainer Hot Drink Cups	1,200





## Ecotainer™ Hot Drink Cups

Ecotainer™ Paper Hot Drink Cups are made using paper from forests that are certified by the Sustainable Forestry Initiative® (SFI®). Ecotainer™ was the first commercially available hot drink cup to utilise a PLA lining rather than a petro-chemical derived moisture barrier. The PLA-based coating also allows the cups to compost in municipal and commercial composting facilities.

Combined with a smaller manufacturing energy requirement, the Ecotainer™ hot drink cup reduces our environmental impact while providing all the functionality of a standard cup. The digital print design on our stock Ecotainer™ hot drink cup will be changing. Ecotainer™ Cold Drink Cups are also available – please contact us for further details.

Custom printing available.

### Ecotainer™ Paper Hot Drink Cups – Stock Design

Stock Code	Description	Capacity	Dimensions (DxH)	Case Qty
SMRE04	4 fl.oz Hot Cup	114ml	62 x 61mm	1,000
SMRE08	8 fl.oz Hot Cup	227ml	80 x 93mm	1,000
SMME10	10 fl.oz Hot Cup (squat)	284ml	90 x 92mm	1,000
SMRE12	12 fl.oz Hot Cup	340ml	90 x 105mm	1,000
SMRE16	16 fl.oz Hot Cup	454ml	90 x 136mm	1,000

### Commercially Compostable PLA Lids

Stock Code	Description	Case Qty
LHRDE16	Sipper Dome Lid Natural White to fit 10, 12, 16 & 20 oz	1,200

### Plastic Lids (not commercially compostable)

Stock Code	Description	Case Qty
LHRM04	Manual Flat Lid to fit 4 oz	1,000
LHRDS08	Sipper Dome Lid White to fit 8 oz	1,000
LHRDSB08	Sipper Dome Lid Black to fit 8 oz	1,000
LHRDS16	Sipper Dome Lid White to fit 10, 12, 16 & 20 oz	1,200
LHRDSB16	Sipper Dome Lid Black to fit 10, 12, 16 & 20 oz	1,200
LHRL16	Tear-Lock Lid White to fit 10, 12, 16 & 20 oz	1,000



## FSC® Wooden Stirrers

Made from 100% natural wood and FSC® (Forest Stewardship Council®) certified, wooden drink stirrers are a commercially compostable alternative to traditional plastic hot drink stirrers. Available in two lengths 5.5" and 7.5", both of which have rounded ends. Wooden stirrers are a natural complement for all hot drinks. Supplied in Enviroware® branded card dispenser boxes or in clear bags.

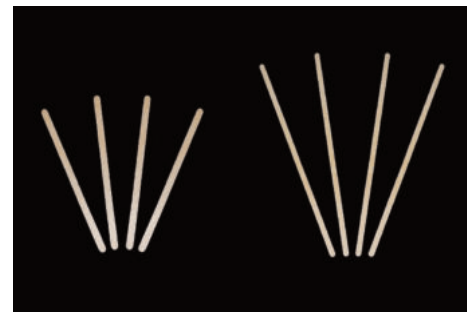


### FSC® Wooden stirrers in Enviroware® branded dispenser boxes

Stock Code	Description	Case Qty
N1088	5.5" (140mm) Rounded End Stirrer	10 x dispenser box of 1,000
N1087	7.5" (190mm) Rounded End Stirrer	10 x dispenser box of 500

### FSC® Wooden stirrers supplied in bags

Stock Code	Description	Case Qty
N2908B	5.5" (140mm) Rounded End Stirrer	10 x bag of 1,000
N2911B	7.5" (190mm) Rounded End Stirrer	10 x bag of 1,000



## FSC® Paper Straws

Paper Drink Straws are the latest addition to the Enviroware® range. Free from any wax coating making them recyclable.

Available in 3 sizes and 3 colour options - Supplied in handy card dispenser boxes for neat storage and dispensing. Each dispenser contains approx 250 straws.

Paper Straws are also available in other colours and sizes, contact us to find out more.



### FSC® Paper Straws

Stock Code	Description	Dimensions (DxL)	Case Qty
PSB12054	Paper Sip Straw - Black	5 x 120mm	4,000
PSB19764	Paper Straw - Black	6 x 197mm	4,000
PSB23083	Paper Straw - Black	8 x 230mm	3,000
PSST19764	Paper Straw Red & White Stripe	6 x 197mm	4,000
PSST23083	Paper Straw Red & White Stripe	8 x 230mm	3,000
PSW19764	Paper Straw White	6 x 197mm	4,000
PSW23083	Paper Straw White	8 x 230mm	3,000



## Clear PLA Cold Drink Cups and Combination Cups

We have a wide range of cup sizes and lid types available to try and provide a packaging solution for any type of take away cold drink. The 76mm & 96mm diameter cups can be combined with a special lid and portion pot for use as innovative food packaging.

### Clear PLA Cold Drink Cups

Clear PLA Cold Drink Cups are commercially compostable and an eco-friendly alternative to other petro-chemical derived products which degrade very slowly and pollute our environment.

Enviroware® Clear PLA cold drink cups function and look like traditional plastic cups; offering the benefits of high clarity and strength.

The range consists of 9 tumbler sizes and various types of lid - flat and domed lids with or without a straw-slot / hole – ideal for serving any cold beverage or cold foods.

Clear PLA cold drink cups meet the needs of both consumers and the environment alike. Custom printing available. Small print runs of digitally printed PLA cups are available.



Clear PLA Cold Drink Cups and Lids				
Stock Code	Description	Capacity	Dimensions (DxH)	Case Qty
R150Y	5 fl. oz Cup	140ml	76 x 66mm	2,000
R200Y	7 fl. oz Cup	200ml	76 x 83mm	1,000
R250Y	8 fl. oz Cup	230ml	76 x 89mm	1,000
R280Y	9 fl. oz Tall Cup	255ml	76 x 105mm	1,000
R300Y	9 fl. oz Squat Cup	250ml	96 x 82mm	1,000
R360Y	12 fl. oz Cup	360ml	96 x 105mm	1,000
R500Y	16 fl. oz Cup	450ml	96 x 136mm	1,000
R600Y	20 fl. oz Cup	600ml	96 x 140mm	1,000
R700Y	24 fl. oz Cup	700ml	96 x 154mm	1,000
RCEPTL	CE Marked Pint to Line Clear PLA Cup		96 x 140 mm	1,000
C76	Raised flat straw-slot lid for 5, 7, 8 & 9 fl. oz tall cups		-	1,000
C76NS	Raised flat lid without straw-slot for 5, 7, 8 & 9 fl. oz tall cups		-	1,000
C76DX	Domed lid with straw-slot for 5, 7, 8 & 9 fl. oz tall cups		-	1,000
C96	Flat straw-slot lid for 9 fl. oz squat, 12, 16 & 20 fl. oz cups		-	1,000
C96NS	Flat lid without straw slot 9 fl. oz squat, 12, 16 & 20 fl. oz cups		-	1,000
C96DB	Domed lid with hole for 9 fl. oz squat, 12, 16 & 20 fl. oz cups		-	1,000
C96DNH	Domed lid without hole for 9 fl. oz squat, 12, 16 & 20 fl. oz cups		-	1,000



## Clear PLA Combination Lids & Portion Pots

The combination pot system comprises of three pieces – a cup, a portion pot and a lid. The portion pot simply clips inside the raised lid, which can then be fitted to the chosen cup.

The system is ideal for all types of food where the ingredients are required to be kept separate until consumption i.e. granola with yoghurt, crudité's with dip, fresh fruit with cream.

Other sizes of portion pots and lids are available, please contact us for details.

### PLA Portion Pot & Domed Lid Insert for 96mm Diameter PLA Cold Drink Cups

Stock Code	Description	Capacity	Dimensions (DxH)	Case Qty
R60Y	2 fl. oz Insert Portion Pot	56ml	75 x 25mm	2,000
RBC96	96mm Combination Raised Lid	-	-	1,000
R300Y	9 fl. oz Squat Cup	250ml	96 x 82mm	1,000
R360Y	12 fl. oz Cup	360ml	96 x 105mm	1,000
R500Y	16 fl. oz Cup	450ml	96 x 136mm	1,000
R600Y	20 fl. oz Cup	600ml	96 x 140mm	1,000
R700Y	24 fl. oz Cup	700ml	96 x 154mm	1,000



### 12/14 fl oz Clear PLA Cup Combi Pack

Stock Code	Description	Dimensions (DxH)	Case Qty
FKGC124CP	Clear 12/14oz Cup Combi Pack (355ml) cup, 59ml portion pot & flat lid	Cup : 93mm x 110mm Portion Pot : 89mm x 29mm	500 of each



## Clear Round PLA Food Containers

Our food containers come in a large array of sizes with a lid available to fit each and every size.

### Clear PLA Containers & Lids

Clear, round PLA salad and deli containers are available in a wide range of sizes, each having a secure fit lid available to purchase separately. Strong, durable and crystal clear, this range protects food and ensures its freshness whilst allowing consumers to view the contents.

Other sizes and styles are available to order – please contact us for more information.



#### Clear PLA Containers & Lids

Stock Code	Description	Capacity	Dimensions (DxH)	Case Qty
P240	8oz Round Container	236ml	121 x 35mm	1,000
P360	12oz Round Container	360ml	121 x 52mm	1,000
P500	16oz Round Container	500ml	121 x 73mm	1,000
P740	24oz Round Container	740ml	121 x 110mm	500
P940	32oz Round Container	936ml	121 x 150mm	500
C121	Lid for P240, P360, P500, P500W, P740 & P940	-	-	1,000
P600	21oz Round Container	600ml	143 x 57mm	600
P700	25oz Round Container	700ml	143 x 70mm	600
C143	Lid for P600 & P700	-	-	600

## Portion Pots & Lids

Enviware® Clear PLA Portion Pots are currently available in 5 sizes.

Snug fitting lids prevent spillages and leaks – making these pots ideal for a multitude of applications. They are perfect for serving individual portions of sauces and dressings.

Custom printing available on selected sizes.

Clear PLA Portion Pots & Lids				
Stock Code	Description	Capacity	Dimensions (DxH)	Case Qty
P100CL	1 oz Clear Portion Pot	28ml	45 x 30mm	5,000
P100LID	Clear Lid to fit 1 oz Pot	-	-	5,000
GPC200	2 oz Clear Portion Pot	56ml	62 x 31mm	2,000
GXL250PC	Clear Lid to fit 2 oz Pot	-	-	2,000
GPC325	3.25 oz Clear Portion Pot	92ml	76 x 33mm	2,000
GPC400	4 oz Clear Portion Pot	114ml	76 x 42mm	2,000
GXL345PC	Clear Lid to fit 3 & 4 oz Pots	-	-	2,000
R140Y	4.9 oz Clear Portion Pot	139 ml	76 x 45mm	1,000
C76NS	Clear Lid to fit 4.9 oz Pot	-	-	1,000



Enviware® Paper Portion Pots are currently available in 2 sizes. They are perfect for serving individual portions of sauces and dressings. They are suitable for use in a microwave but are also recyclable.

Paper Portion Pots			
Stock Code	Description	Dimensions (DxH)	Case Qty
F100	1floz Paper Portion Pot	42mm x 28mm	5000
F200	2floz Paper Portion Pot	53mm x 31mm	5000



## Round Paper Food / Soup Containers & Lids

Packaging for hot or cold foods including soups, chilli, pasta & salads.

### Leaf 2 Design Kraft Paperboard Food Containers

Our brown kraft paper food containers with PLA lining are currently available in 8oz, 12oz and 16oz capacities, contact us to find out about the other sizes we have available. These high quality containers are made from heavy gauge, kraft unbleached card. Separate lids are available in two material options; choose from matching brown kraft vented paperboard lids with PLA lining or vented PP plastic lids (not commercially compostable).

The brown and green stock design incorporates the words “sustainable, renewable, and compostable”.

Custom printing is available.

#### Kraft Paperboard Food Containers (Stock Design)

Stock Code	Description	Capacity	Dimensions (DxH)	Case Qty
KEL2SC08	8oz Food Container	227ml	91 x 60mm	500
KEL2SC12	12oz Food Container	341ml	91 x 87mm	500
KEL2SC16	16oz Food Container	454ml	98 x 102mm	500

#### Kraft Paperboard Lids

Stock Code	Description	Case Qty
KEL2SCL08K	Paperboard Vented Lid for 8 & 12oz Food Container	500
KEL2SCL16K	Paperboard Vented Lid for 16oz Food Container	500

#### Translucent Plastic Lids (not commercially compostable)

Stock Code	Description	Case Qty
PPLID08	Plastic Vented Lid for 8 & 12oz Food Container	500
PPLID16	Plastic Vented Lid for 16oz Food Container	500



For more information contact us on tel: +44(0)1283 538259 email: [sales@celebration.co.uk](mailto:sales@celebration.co.uk) or visit: [www.enviroware.co.uk](http://www.enviroware.co.uk)

## Leaf 2 Design White Paperboard Food Containers

Leaf 2 design white paperboard food containers with PLA lining are certified commercially compostable according to DIN EN13432 standards and are printed with the Din Certco “seedling” logo. The white and green stock design incorporates the words “sustainable, renewable and compostable”. Available in 8oz, 12oz and 16oz, other sizes are available contact us to find out more.

Custom printing is available.

White PLA commercially compostable vented lids are available to fit all three stock sizes.

A white PP plastic lid is available to fit 12oz and 16oz (not commercially compostable).

Matching Paper Hot Drink Cups are also available (see page 7).



### Leaf 2 Design White Paperboard Food Containers (Stock Design)

Stock Code	Description	Capacity	Dimensions (DxH)	Case Qty
EWL2CONT08	8oz Food Container	227ml	90 x 60mm	1,000
EWL2CONT12	12oz Food Container	341ml	114 x 63mm	500
EWL2CONT16	16oz Food Container	455ml	114 x 82mm	500

### PLA Commercially Compostable Lids

Stock Code	Description	Case Qty
ECPLA08	PLA Vented Lid for 8oz Container	1,000
ECPLA12	PLA Vented Lid for 12 & 16oz Container	1,000

### Plastic Lid (not commercially compostable)

Stock Code	Description	Case Qty
EPP12	Plastic Vented Lid for 12 & 16oz Container	1,000



## Ecotainer™ Paperboard Food Containers

Ecotainer™ food containers are an environmentally friendly alternative to standard PE coated paperboard containers.

The fibre used to make the paperboard meets Sustainable Forestry Initiative® (SFI®) chain-of-custody certification standards. Utilising a corn derived (PLA) inner moisture barrier, the containers are fully commercially compostable.

Lids are available in two material options – PS plastic or white card paper.

Custom printing is available.



Ecotainer™ Food Containers (Stock Design)				
Stock Code	Description	Capacity	Dimensions (DxH)	Case Qty
DFRE08	8oz Food Container	227ml	95 x 60mm	1,000
DFRE12	12oz Food Container	341ml	109 x 71mm	1,000
DFSE16	16oz Squat Food Container	455ml	115 x 78mm	500
DFRE32	32oz Food Container	909ml	115 x 132mm	500

White Paperboard Lids		
Stock Code	Description	Case Qty
LFTFF16	White Paperboard Lid for 8oz Container	500
LFRFF12	White Paperboard Lid for 12oz Container	500
LFRFF32	White Paperboard Lid for 16 & 32oz Container	500



PLA Lids		
Stock Code	Description	Case Qty
LFTFHE16	PLA Food Container Lids for 8oz	1000
LFRFHE12	PLA Food Container Lids for 12oz	1000
LFRFHE32	PLA Food Container Lids for 16 & 32oz	1000



Plastic Lids (not commercially compostable)		
Stock Code	Description	Case Qty
LFTFH16	White Vented Hot Food Lid for 8oz Container	1,000
LFRFH12	White Vented Hot Food Lid for 12oz Container	1,000
LFRFH32	White Vented Hot Food Lid for 16 & 32oz Container	500

For more information contact us on tel: +44(0)1283 538259 email: [sales@celebration.co.uk](mailto:sales@celebration.co.uk) or visit: [www.enviroware.co.uk](http://www.enviroware.co.uk)

## Bagasse (Sugar Cane Fibre) Dinnerware & Serving Trays

Plates, Platters & Bowls are available in materials including moulded sugar cane fibre (bagasse).

### Moulded Fibre Plates, Platters & Bowls

Moulded fibre (bagasse) dinnerware is natural cream in colour. The range provides an alternative to traditional paper plates and bowls, generally being stronger and more rigid by comparison.

These products are suitable for use in cold cabinets and microwaves, resisting water temperatures of up to 100° C and oil temperatures of up to 150° C. Recyclable PET clear plastic lids are available to fit some items, please note that the plastic lids are not commercially compostable.



Pictured above: Square plates (codes BSQ16, BSQ20 & BSQ26) with clear plastic lids

Plates, Platters & Bowls – Square & Rectangular				
Stock Code	Description	Capacity	Dimensions (LxWxH)	Case Qty
BSQ16	6.25" Square Plate	-	160 x 160 x 14mm	500
BSQ20	7.85" Square Plate	-	200 x 200 x 12mm	500
BSQ26	10.25" Square Plate	-	260 x 260 x 21mm	500
PETP036M	Clear Plastic Lid for 6.25" Square Plate	-	-	250
PETP035M	Clear Plastic Lid for 7.85" Square Plate	-	-	250
PETP031M	Clear Plastic Lid for 10.25" Square Plate	-	-	250
BRE13	10.25 x 5" Rectangular Plate	-	260 x 130 x 12mm	500
HBP910	10 x 9" Square / Oval Plate	-	254 x 228 x 20mm	500

### Plates, Platters & Bowls – Round

Stock Code	Description	Capacity	Dimensions (DxH)	Case Qty
PE011S	6" Round Plate	-	155 x 15mm	1,000
PE012S	7" Round Plate	-	180 x 17mm	500
PE013S	9" Round Plate	-	230 x 17mm	500
PE014S	10.25" Round Plate	-	260 x 19mm	500
PE035S	10.25" Round 3 Compartment Plate	-	258 x 25mm	500
BL021X	12oz Wide Rim Round Bowl	340ml	154 x 46mm	500
BL023X	14oz Round Bowl	400ml	178 x 40mm	1,000



Pictured above: 10.25" Round 3 Compartment Plate (code PE035S)



Pictured above: 18 & 26oz Oval Bowls (codes L066 & L065) with clear plastic lids

### Plates, Platters & Bowls – Oval

Stock Code	Description	Capacity	Dimensions (DxH)	Case Qty
PE045S	10.35 x 7.83" Oval Platter	-	262 x 198 x 16mm	500
L066	18oz Oval Bowl	500ml	203 x 135 x 41mm	300
L065	26oz Oval Bowl	740ml	236 x 169 x 41mm	300
PETL066B	Clear Plastic Lid for 18oz Oval Bowl	-	-	300
PETL065B	Clear Plastic Lid for 26oz Oval Bowl	-	-	300



## Regalia™ Bagasse (Sugar Cane Fibre) Trays & Lids

Regalia™ trays are a strong, grease and cut resistant alternative to traditional plastic serving trays.

The food trays are made from sugarcane fibres, a non-wood and rapidly renewable resource. Clear lids are available made from a plant based plastic (Ingeo™ PLA).

Suitable for serving hot or cold foods.

Regalia™ Bagasse Trays & Lids			
Stock Code	Description	Dimensions (LxWxH)	Case Qty
EPSCTRS14	14" Square Tray	359 x 359 x 31mm	100
EPSCTRS14LID	Clear PLA Lid to fit 14" Square Tray	370 x 356 x 100mm	50
EPSCTRS16	16" Square Tray	410 x 410 x 31mm	100
EPSCTRS16LID	Clear PLA Lid to fit 16" Square Tray	426 x 402 x 100mm	50
EPSCTRS18	18" Square Tray	460 x 470 x 35mm	100
EPSCTRS18LID	Clear PLA Lid to fit 18" Square Tray	470 x 455 x 100mm	50

## Bagasse (Sugar Cane Fibre) Take Away Food Boxes and Trays

We supply moulded fibre (bagasse) trays and food boxes in the clamshell style, with hinged lids, or as a two-piece having separate lids.

### Hinged Fast Food Boxes / Clamshells and Trays

There are a wide range of sizes and options available, including boxes suitable for packaging popular fast food items such as burgers, jacket potatoes and fish & chips.

Made from moulded fibre; the boxes benefit from being strong and rigid in construction.

These products are suitable for use in cold cabinets and microwaves, resisting water temperatures of up to 100° C and oil temperatures of up to 150° C.



Hinged Fast Food Boxes / Clamshells and Trays			
Stock Code	Description	Dimensions when closed (LxWxH)	Case Qty
HB030	Small Burger Box	130 x 126 x 72mm	500
HBB31	Large Burger Box	141 x 146 x 80mm	500
HBB50	Medium Food Box	193 x 147 x 78mm	250
HBB51	Large Food Box	240 x 151 x 70mm	250
HBB52	Extra Large Food Box	240 x 213 x 75mm	250
HB062	2 Compartment Extra Large Food Box	246 x 210 x 81mm	250
HBB55	5x5" Hinged Container	152 x 152 x 81mm	400
HBB64	6x4" Hinged Container	171 x 123 x 50mm	1,000
HBB88	8x8" Hinged Container	218 x 213 x 66mm	250
HBB883C	8x8" Hinged 3 Compartment Container	221 x 203 x 65mm	250
HBB96	9x6" Hinged Container	230 x 169 x 80mm	200
HBB90	13x6" Hinged Container	335 x 155 x 72mm	250
HBTRAY1	No1 Tray	179 x 101 x 24mm	500
HBTRAY2	No2 Tray	178 x 132 x 37mm	500
HBTRAY3	No3 Tray	223 x 132 x 35mm	500
HBTRAYC	Chippy Tray	164 x 126 x 30mm	500



## Folia™ Bagasse (Sugar Cane Fibre) Take Away Food Containers

The Folia™ range has been designed to completely redefine the take away foodservice experience. The clever design improves consumer convenience whilst also reducing the negative impact on the environment through use of natural materials (made from sugarcane fibres).

The innovative design features fold-in side flaps that help to prevent spills, along with tear away compartments which are handy for holding condiment sachets and cutlery. Other sizes are available.

### Folia™ Take Away Food Containers

Stock Code	Description	Dimensions when closed (LxWxH)	Case Qty
EPFSC12	12oz Folia™ Food Container	191 x 134 x 50mm	400
EPFSC22	22oz Folia™ Food Container	319 x 233 x 59mm	300
EPFSC35	35oz Folia™ Food Container	347 x 255 x 70mm	300
EPFSC58	58oz Folia™ Food Container	433 x 322 x 90mm	150



## Rectangular Bagasse (Sugar Cane Fibre) Food Trays with PP Plastic Lids

Fibre moulded 500ml & 650ml take away trays are available with a translucent PP snap on plastic lid; the same lid fits both sizes of container.

### Food Trays with PP Plastic Lids (Lids are not commercially compostable)

Stock Code	Description	Capacity	Dimensions (LxWxH)	Case Qty
HBT500	19.7oz Rectangular Tray	500ml	173 x 119 x 45mm	500
HBT650	25.6oz Rectangular Tray	650ml	173 x 119 x 57mm	500
HBTPLL	PP Plastic Lid for Rectangular Containers	-	-	500



## Palm Leaf Plates & Bowls

Palm Leaf plates and bowls are made from discarded leaves from the Adaka nut palm.

The leaves are collected, cleaned and then mechanically pressed into a mould at 120°C; no additional treatments are required.

Each individual item has its own unique pattern and structure. The plates and bowls vary in style and shape.

Palm leaf dinnerware is impermeable to water / oil and is heat resistant up to 220°C.

Other Palm Leaf items are available – please contact us for further details.



Pictured above (top – bottom): 24cm square plate (code 5040), 17 x 12cm rectangular plate (code 3391) & 29 x 19cm oval platter (code N135)

### Palm Leaf Plates & Bowls

Stock Code	Description	Approx. Dimensions (LxWxH)	Case Qty
5030	17cm Square Plate	170 x 170 x 27mm	100
5040	24cm Square Plate	240 x 240 x 28mm	100
3391	17 x 12cm Rectangular Plate	170 x 120 x 20mm	200
3394	25 x 17cm Rectangular Plate	250 x 170 x 10mm	100
5031	18cm Round Plate	180 x 180 x 25mm	100
5033	20cm Round Plate	200 x 200 x 26mm	100
5039	24cm Round Plate	240 x 240 x 28mm	100
N135	29 x 19cm Oval Platter	295 x 195 x 30mm	100

## Kraft Paper Food Trays

Plain kraft paper food trays are available in a range of sizes from ¼ lb to 3lb. With small proportions, these trays are handy for presenting appetisers or snacks to go. They are recyclable and natural brown in colour as they are made from unbleached paperboard. As paperboard is uncoated, the trays are commercially compostable. They are only suitable for hot or cold dry foods.



Other sizes are available, contact us for more information.

Kraft Paper Food Trays			
Stock Code	Description	Dimensions (LxWxH)	Case Qty
SQP7125	Plain Kraft Brown 1/4lb Paper Food Tray	108 x 76 x 29mm	1000
SQP7150	Plain Kraft Brown 1/2lb Paper Food Tray	137 x 96 x 32mm	1000
SQP7152	Plain Kraft Brown 2lb Paper Food Tray	165 x 121 x 45mm	1000
SQP7143	Plain Kraft Brown 2.5lb Paper Food Tray	184 x 133 x 48mm	500
SQP7153	Plain Kraft Brown 3lb Paper Food Tray	206 x 150 x 54mm	500

## Cutlery

Combine this cutlery with Enviroware dinnerware to complete the eco-friendly place setting.

### FSC® Wooden Cutlery

Wooden Cutlery is made from birch wood and are FSC® (Forest Stewardship Council®) certified.

The products are 100% natural - there is no coating, waxing or chemicals, making them fully commercially compostable.



Wooden Cutlery			
Stock Code	Description	Dimensions (Length)	Case Qty
WFORK	Fork	160mm	1,000
WKNIFE	Knife	165mm	1,000
WSPOON	Spoon	160mm	1,000
WSMSPOON	Small Spoon	110mm	1000
WSPORK	Spork	105mm	1000
WCHIPFORKBULK	Wooden Chip Fork (master case)	95mm	20 x 1,000
WCHIPFORK	Wooden Chip Fork	95mm	1,000





## CPLA Compostable Cutlery

CPLA Cutlery is medium length, medium weight, and has the word “compostable” embossed on the handle of each piece.

The range is natural in colour and is suitable for warm and hot foods up to 85°C.

Commercially compostable cutlery offers the same strength as high quality standard plastic cutlery.



### CPLA Cutlery (suitable for temperatures up to 85°C)

Stock Code	Description	Dimensions (Length)	Case Qty
CPLAK	Knife	167mm	1,000 (20 x 50 per bag)
CPLAF	Fork	167mm	1,000 (20 x 50 per bag)
CPLAS	Spoon	167mm	1,000 (20 x 50 per bag)
CPLASS	Small Spoon	130mm	1,000 (20 x 50 per bag)
CPLASP	Spork	126mm	1,000 (20 x 50 per bag)

### CPLA Black Cutlery (suitable for temperatures up to 85°C)

Stock Code	Description	Dimensions (Length)	Case Qty
CPLAKE	Knife	167mm	1,000 (20 x 50 per bag)
CPLAFE	Fork	167mm	1,000 (20 x 50 per bag)
CPLASE	Spoon	167mm	1,000 (20 x 50 per bag)
CPLASSE	Small Spoon	130mm	1,000 (20 x 50 per bag)
CPLASPE	Spork	126mm	1,000 (20 x 50 per bag)

CPLA Cutlery Packs are also available to purchase in either a compostable or plastic film. Each pack includes a knife, fork, spoon and an Enviroware® branded napkin, contact us for more information.



For more information contact us on tel: +44(0)1283 538259 email: [sales@celebration.co.uk](mailto:sales@celebration.co.uk) or visit: [www.enviroware.co.uk](http://www.enviroware.co.uk)

## Bakeware

Single use baking moulds are sturdily designed to eliminate the need for metal pans. Once used for baking, the food remains in the disposable mould, which becomes an integral part of the packaging. A variety of shapes and sizes are available to suit a wide range of applications.



### Wooden Baking Moulds with Silicone Paper Inserts

Wooden Baking Moulds with brown silicone paper inserts are suitable for oven baking foods, such as bread or cakes, withstanding 70 minutes in the oven at 200°C or 3 minutes at 270°C.

As the moulds are used for both baking and presentation of foods, the amount of washing up is reduced as is the time spent packaging. The wooden moulds are made from FSC® (Forest Stewardship Council®) certified lime wood with a 100% natural fibre seam holding them together.



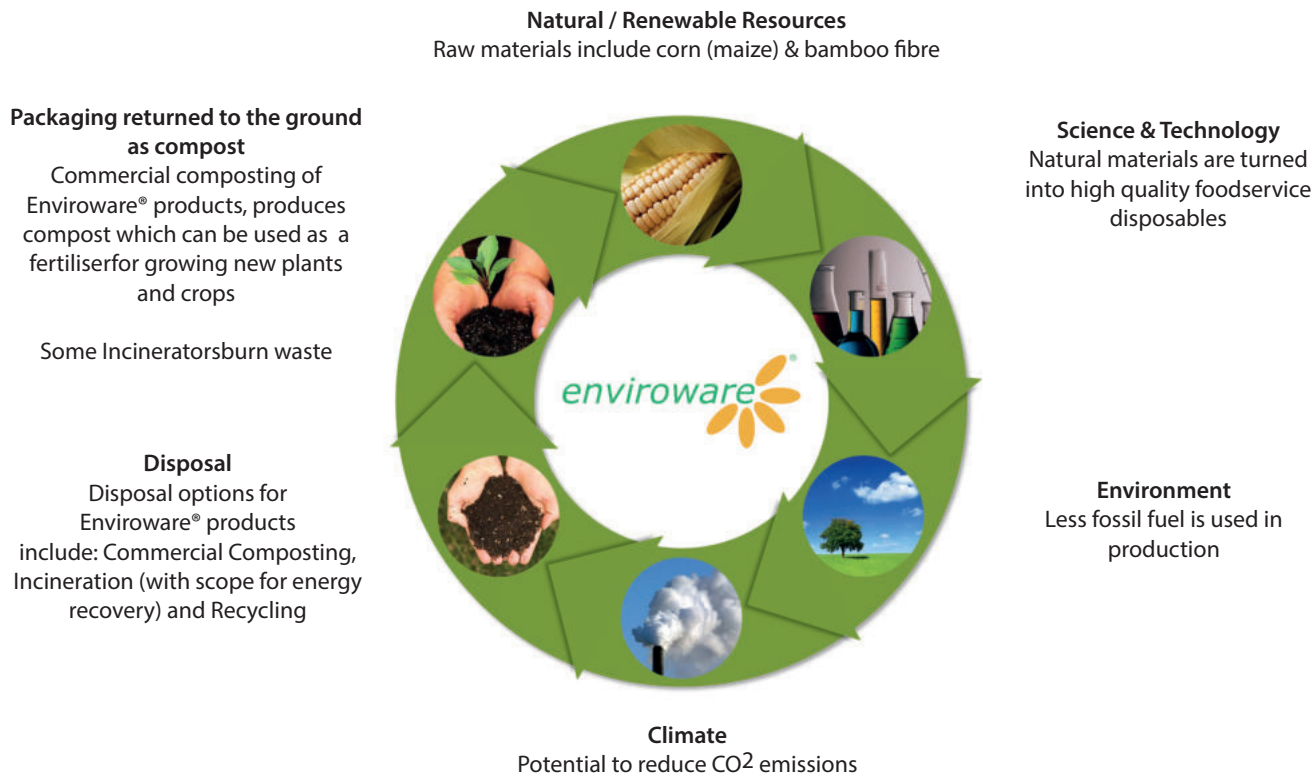
\*Please note that the silicone inserts are not FSC® certified.

The mark of responsible forestry

#### Wooden Baking Moulds

Stock Code	Description	Case Qty
13566	95 x 85 x 40mm Baking Mould with insert	540
13567	115 x 65 x 35mm Baking Mould with insert	585
13568	120 x 93 x 33mm Baking Mould with insert	400
13570	180 x 108 x 57mm Baking Mould with insert	300

Oil is a finite resource, as such society is placing a greater importance on moving away from a dependency on oil based packaging. Enviroware® foodservice disposables help to meet this need...



---

Celebration have a dedicated department able to dispatch sample packs of our products to aid you in choosing the correct product. To receive a sample pack of any product mentioned in this brochure, please contact us by telephone on +44 (0) 1283 538259 or e-mailing [sales@celebration.co.uk](mailto:sales@celebration.co.uk).

---

For more information contact us on tel: +44(0)1283 538259 email: [sales@celebration.co.uk](mailto:sales@celebration.co.uk) or visit: [www.enviroware.co.uk](http://www.enviroware.co.uk)

Try before you buy - contact us for a free sample pack of the Enviroware® products



### First Stop Supplies

Unit 72 | Condor Close | Woolsbridge Industrial Park | Three Legged Cross | Dorset | BH21 6SU  
T: 01202 827666 | E: sales@firststopsupplies.co.uk | www.firststopsupplies.co.uk

All measurements and capacities stated in this brochure are approximate

Enviroware® is a registered brand name of Celebration Paper and Plastics Ltd.

The *enviroware*  logo is a registered logo belonging to Celebration Paper and Plastics Ltd

Printed on Cocoon 100% recycled, FSC® (Forest Stewardship Council®) certified paper



2019 Issue 1